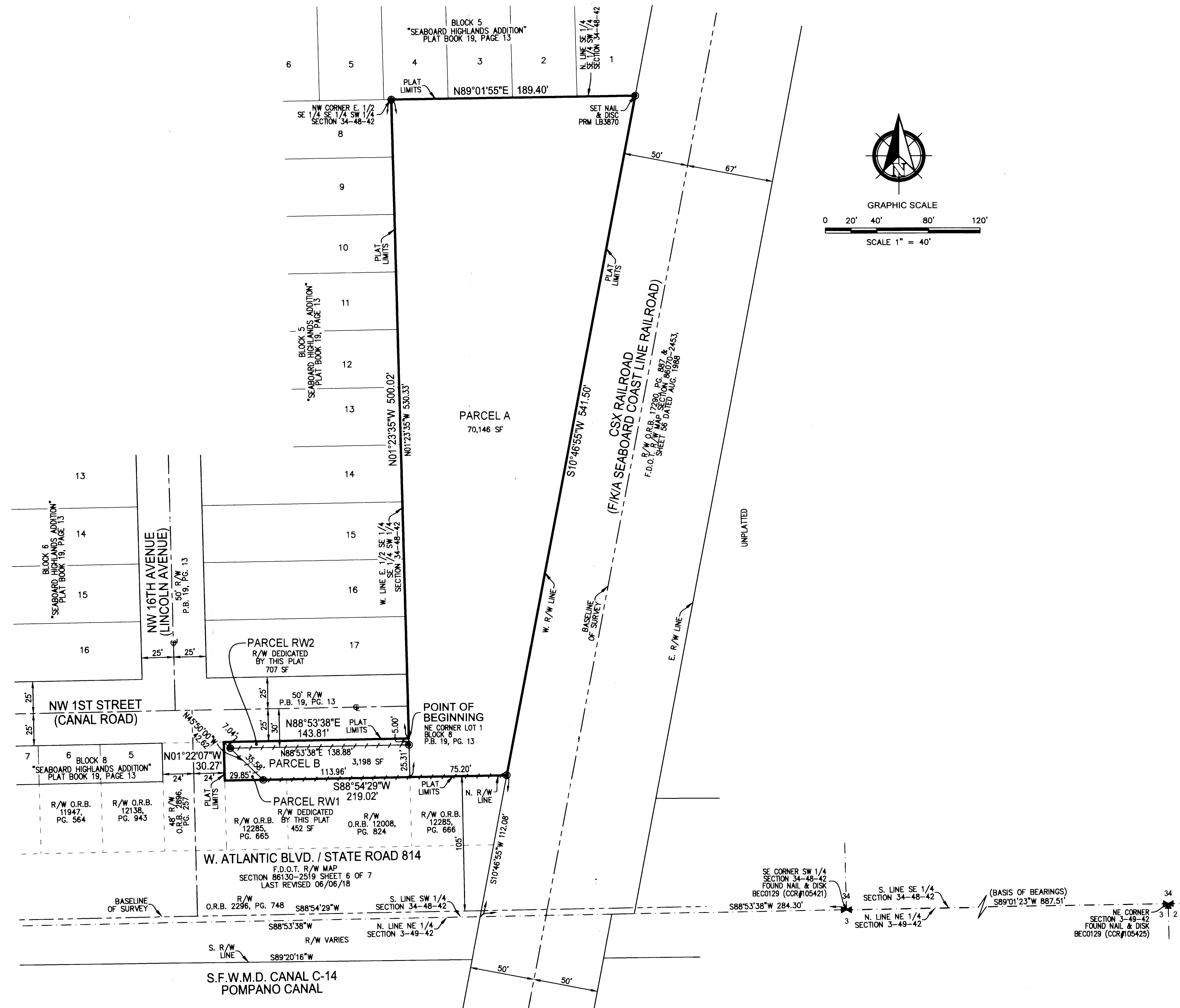


PREPARED BY  
**PULICE LAND SURVEYORS, INC.**  
5381 NOB HILL ROAD  
SUNRISE, FLORIDA 33351  
954-572-1777  
FAX NO. 954-572-1778

# ATLANTIC INDUSTRIAL PARK

A REPLAT OF PORTION OF LOTS 1-3, BLOCK 8, SEABOARD HIGHLANDS ADDITION (P.B. 19, PG. 13, B.C.R.) AND A PORTION OF THE SOUTHEAST 1/4 OF THE SOUTHEAST 1/4 OF THE SOUTHWEST 1/4 OF SECTION 34, ALL IN SECTION 34, TOWNSHIP 48 SOUTH, RANGE 42 EAST, CITY OF POMPANO BEACH, BROWARD COUNTY, FLORIDA

**INSTR #118976865**  
**Plats 183/630**  
Page 2 of 2



## SURVEYOR'S NOTES:

- THIS PLAT IS RESTRICTED TO 48,000 SQUARE FEET OF INDUSTRIAL USE ON PARCEL A AND NO DEVELOPMENT ON PARCEL B.
- THIS NOTE IS REQUIRED BY CHAPTER 5, ARTICLE IX, BROWARD COUNTY CODE OF ORDINANCES, AND MAY BE AMENDED BY APPROVAL OF THE BROWARD COUNTY BOARD OF COUNTY COMMISSIONERS. THE NOTATION AND ANY AMENDMENTS THERETO ARE SOLELY INDICATING THE APPROVED DEVELOPMENT LEVEL FOR PROPERTY LOCATED WITHIN THE PLAT AND DO NOT OPERATE AS A RESTRICTION IN FAVOR OF ANY PROPERTY OWNER INCLUDING AN OWNER OR OWNERS OF PROPERTY WITHIN THIS PLAT WHO TOOK TITLE TO THE PROPERTY WITH REFERENCE TO THIS PLAT.
- ANY STRUCTURE WITHIN THIS PLAT MUST COMPLY WITH SECTION 2.1.f., DEVELOPMENT REVIEW REQUIREMENTS, OF THE BROWARD COUNTY LAND USE PLAN, REGARDING HAZARDS TO AIR NAVIGATION.
- BEARINGS SHOWN HEREON ARE BASED ON THE SOUTH LINE OF THE SE 1/4 OF SECTION 34-48-42 HAVING A BEARING OF SOUTH 89°01'23\" WEST RELATIVE TO THE STATE PLANE COORDINATE SYSTEM, EAST ZONE, NORTH AMERICAN DATUM OF 1983 (2007 ADJUSTMENT) AS SHOWN ON PLAT BOOK 183, PAGE 382, BROWARD COUNTY PUBLIC RECORDS.
- ALL RECORDED DOCUMENTS DEPICTED HEREON ARE RECORDED IN THE PUBLIC RECORDS OF BROWARD COUNTY.
- NOTICE: THIS PLAT, AS RECORDED IN ITS GRAPHIC FORM, IS THE OFFICIAL DEPICTION OF THE SUBDIVIDED LANDS DESCRIBED HEREIN AND WILL IN NO CIRCUMSTANCES BE SUPPLANTED IN AUTHORITY BY ANY OTHER GRAPHIC OR DIGITAL FORM OF THE PLAT. THERE MAY BE ADDITIONAL RESTRICTIONS THAT ARE NOT RECORDED ON THIS PLAT THAT MAY BE FOUND IN THE PUBLIC RECORDS OF THIS COUNTY.
- THE FOLLOWING NOTE IS REQUIRED BY THE BROWARD COUNTY SURVEYOR PURSUANT TO CHAPTER 177.091, SUBSECTION (28), FLORIDA STATUTES. EASEMENTS FOR THE CONSTRUCTION, INSTALLATION, MAINTENANCE, AND OPERATION OF CABLE TELEVISION SERVICES; PROVIDED, HOWEVER, NO SUCH CONSTRUCTION, INSTALLATION, MAINTENANCE, AND OPERATION OF CABLE TELEVISION SERVICES SHALL INTERFERE WITH THE FACILITIES AND SERVICES OF AN ELECTRIC, TELEPHONE, GAS, OR OTHER PUBLIC UTILITY. IN THE EVENT A CABLE TELEVISION COMPANY DAMAGES THE FACILITIES OF A PUBLIC UTILITY, IT SHALL BE SOLELY RESPONSIBLE FOR THE DAMAGES. THIS NOTE DOES NOT APPLY TO PRIVATE EASEMENTS GRANTED TO OR OBTAINED BY A PARTICULAR ELECTRIC, TELEPHONE, GAS, OR OTHER PUBLIC UTILITY. SUCH CONSTRUCTION, INSTALLATION, MAINTENANCE, AND OPERATION SHALL COMPLY WITH THE NATIONAL ELECTRIC SAFETY CODE ADOPTED BY THE FLORIDA PUBLIC SERVICE COMMISSION.
- ALL FACILITIES FOR THE DISTRIBUTION OF ELECTRICITY, TELEPHONE AND CABLE SHALL BE INSTALLED UNDERGROUND.

## LEGEND AND ABBREVIATIONS:

- ⊙ = P.R.M. (SET 4\"X4\"X24\" CONCRETE MONUMENT WITH 2\" ALUMINUM DISC STAMPED \"PRM LB3870\" UNLESS OTHERWISE NOTED)
- ⊙ = CENTERLINE
- /-/- = NON-VEHICULAR ACCESS LINE
- CCR = CERTIFIED CORNER RECORD
- F.D.O.T. = FLORIDA DEPARTMENT OF TRANSPORTATION
- LB = LICENSED BUSINESS
- O.R.B. = OFFICIAL RECORDS BOOK
- P.B. = PLAT BOOK
- PG. = PAGE
- P.R.M. = PERMANENT REFERENCE MONUMENT
- R/W = RIGHT-OF-WAY
- SF = SQUARE FEET
- S.F.W.M.D. = SOUTH FLORIDA WATER MANAGEMENT DISTRICT

**DRC**

PLAT NO.: 009-MP-22

0724 43000036

04.02.2025